



CUBICLE WORLD

INDUSTRIES PVT. LTD.

Toilet Cubicle Partition Systems



RESTROOM PARTITION AND CUBICLES
Exquisite, Elegant and Enduring

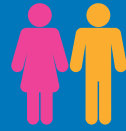
CREATIVE | INNOVATION | TEAM WORK



ABOUT US

Cubicle World, headquartered in Mumbai, is a formidable name in toilet partitions and cubicles. It manufactures, supplies, installs and services these modular partitions and cubicles hand-crafted at the company's modern facilities. Cubicle World, established in 2009, is indeed a one-stop-destination catering to the service needs of customers from far and near. Highly customer-centric, the company endeavors to gain the delight of the customer through its high quality products and unparalleled service support. The company has nurtured a brigade of highly committed and dedicated workforce which goes that extra mile to accomplish excellence in its role, while, at the same time, striving to achieve the bigger goal and greater vision of the company.





www.cubicleworld.in

Why Us?

Quality is a watchword at Cubicle World. Our impeccable quality, unique work ethos and eminent service back-up have helped us earn our spurs. We have an ever-growing list of customers who are leaders in their domains. We are perpetually engaged in meeting their exacting needs and surpassing their expectations. Though most of them are repeat customers, we treat every order as new and challenging. This approach helps us to pool all our resources and deliver best-in-class products of superlative quality and workmanship to our discerning customers. In a nutshell, our business is built on their unwavering trust in us.

HPL Laminated Board Sheet

Technology at work

The High Pressure Laminated boards, conforming to IS: 20146, are manufactured under a special process and a strict quality control regimen. The board is made out of cellulosic material whereas its core is made of layers of cellulose which are impregnated with thermosetting phenolic resin. The decorative design paper on either side of the board is impregnated with special melamine resin. This is manufactured under a very high temperature and a high pressure in a multi-daylight press in which resin polycondensation takes place to give the end product the desired extra toughness and durability.

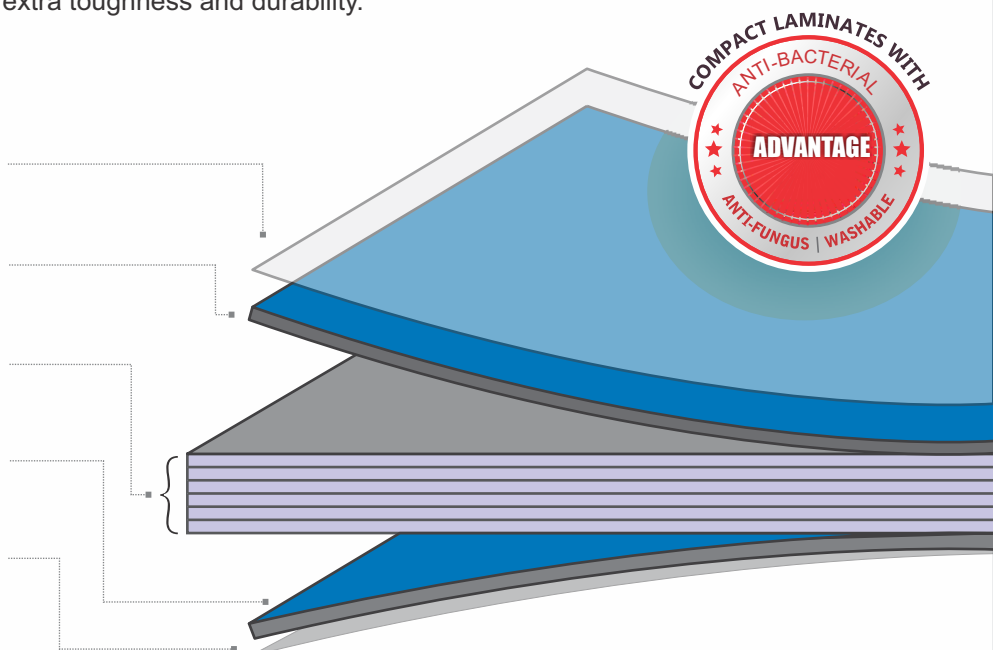
Tissue overlay (for print decors)
Impregnated with melamine resin

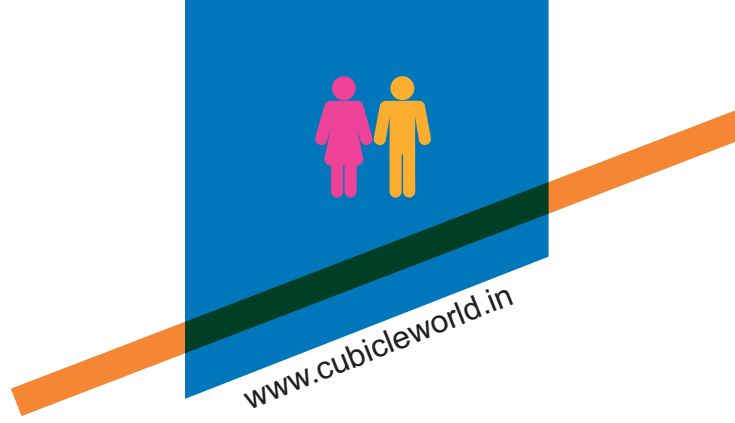
Solid or print design paper layer
Impregnated with melamine resin

Jet black colour kraft paper layer
Impregnated with phenolic resin

Solid or print design paper layer
Impregnated with melamine resin

Tissue overlay (for print decors)
Impregnated with melamine resin





Cubicle World Advantages



Scratch Resistant



Quick Installation



Solvent Resistant



Impact Resistant



Moisture Resistant



Resistant to Cigarette
Burns



Hygienic & Safe



Crack Resistant



Environment Friendly



Durable



Abrasion Resistant



Easy to maintain



Competitively Priced



Noise Deafening
System



Steam Resistant



Wide Range of
Colours & Designs

Used In



Sports, Stadium,
Gym, etc



Restuarants,
Hotels, etc



Schools-Colleges,
Hospital, etc



Mall, Offices,
Theaters, etc



Our Products at a Glance

CW Shine Nylon

CW Silvanium

CW PureEx - SS

CW Routing Glance - SS

CW Floppy

CW Ceiling Hungs SS

CW Unshakable Shoe Boxup

CW Ever Popular SS Pipe

CW PD Door

CW Urinal Partition

CW Kids Toilet Partition

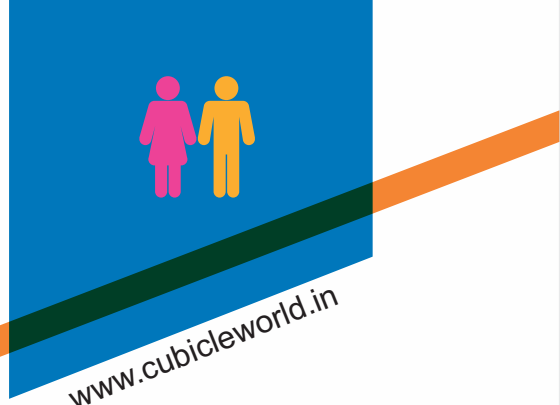
CW Lockers



CW Shine Nylon

Presenting serenity and simplicity at its finest, the CW shine Nylon series is the typical model for restroom cubicles which provide easy construction and high durability. The CW shine Nylon cubicle model is aesthetically designed with the extruded anodised aluminum top rail and polyamide hardware, for giving a clean and a lean look to the restroom setup. its intermediate panel comprises of one undivided piece and has no joints in between. all pilasters as well as doors are 12 mm or 18mm thick with chamfered edges. Thus, for those who like minimalistic designs, CW shine Nylon is the answer.





www.cubicleworld.in



ADJUSTABLE LEG



INDICATOR LOCK



COAT HOOK



GRAVITY HINGE



DOOR KNOB



TOP RAIL (BLACK)
POWDER COATED
ALUMINIUM



U-CHANNEL (BLACK)
POWDER COATED
ALUMINIUM



DOOR STOPPER (BLACK)
POWDER COATED
ALUMINIUM

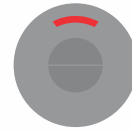
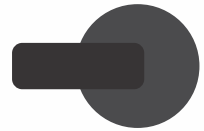


F-CHANNEL (BLACK)
POWDER COATED
ALUMINIUM

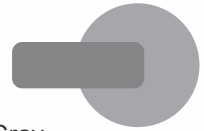
Hardware Colour Range



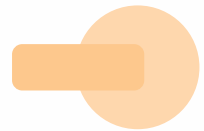
Black



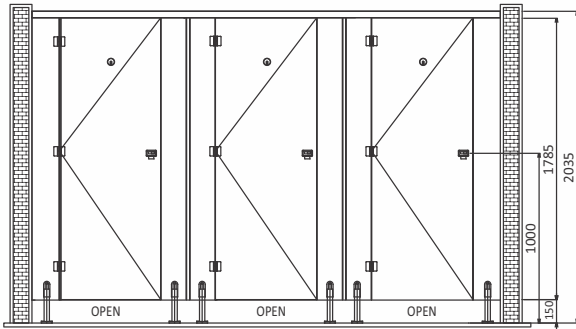
Gray



Ivory

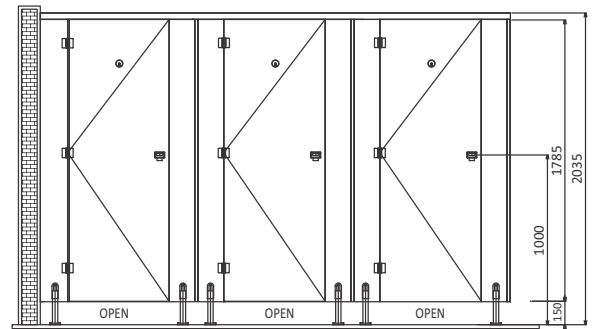


EU-Enclosed Unit

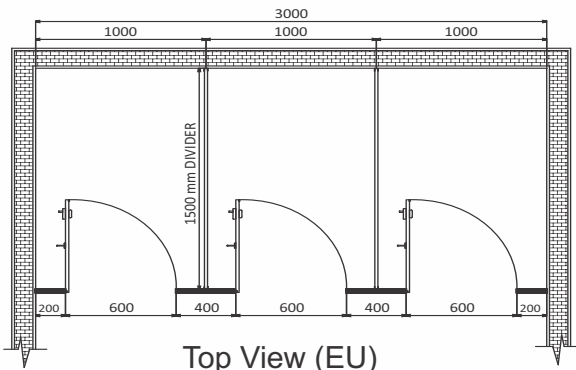


Front View (EU)

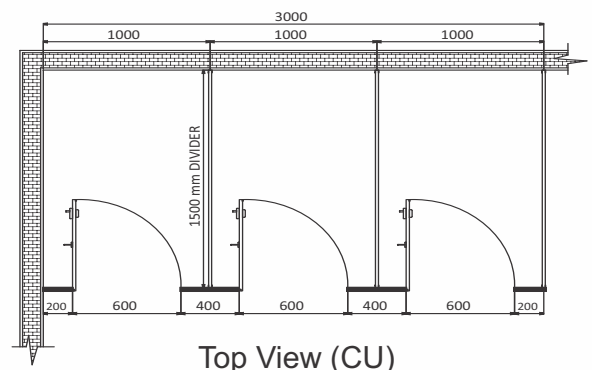
CU-Corner Unit



Front View (CU)



Top View (EU)



Top View (CU)

Hardware Fixing Details

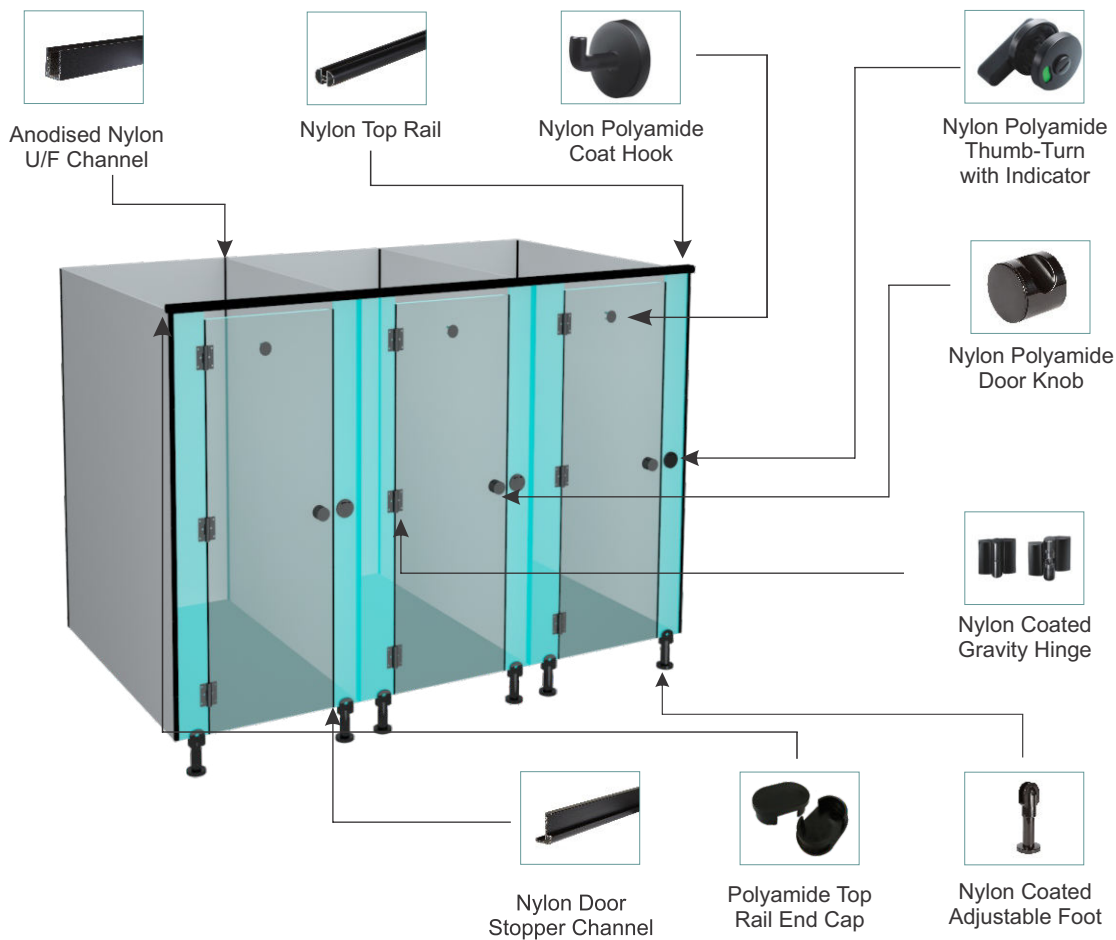
The adjustable foot that supports the pilasters is made from corrosion resistant (Polyamide 6) and its base is anchored to the floor with nylon plug inserted into ground with nylon plug inserted into ground with stainless steel screws. There is ground clearance of 150 mm. Nylon U-channels are used to attach the divider panel with stainless steel (Grade 304) screw inserts to the wall as well as the mid panel. Nylon top rail is used to fix the pilasters at the top. Door stopper channel provides the non-rebating doors and connecting panels with extra ordinary look. Further the doors are incorporated with the noise deafening tape to reduced the noise effect.





Hardware Detailing

Each restroom cubicle is equipped with the following set of hardware fittings:



Dimension Detailing

Standard Dimensions	General (mm)	Physically Challenged (mm)
Width of cubicle	1000	1500
Depth of cubicle	1500	1750
Height of entire cubicle	2035	2035
Width of door	600	900
Height of door	1785	1785
Ground clearance	150	150

CW Silvanium

CW Silvanium is developed for providing higher endurance and spectacular design. Magnificent design united with great functional features makes it an innovative restroom series offering uncompromised quality at an economical price along with extraordinary benefits. Engineered with 12mm or 18mm thick high pressure Compact Laminate, this model comes with the combination of stainless steel hardwares with extruded anodised aluminum top rail and fixing channels. Thus, it's a valuable choice for users who desire a highly adaptable restroom space, preferred across the globe for its budget effective product detailing and matchless quality.





ADJUSTABLE LEG
STAINLESS STEEL
316 SS



INDICATOR LOCK
STAINLESS STEEL
304 SS



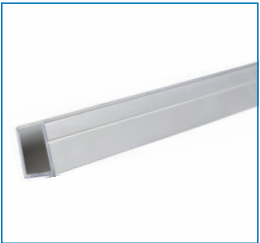
COAT HOOK
STAINLESS STEEL
304 SS



GRAVITY HINGE
STAINLESS STEEL
304 SS



DOOR KNOB
STAINLESS STEEL
304 SS



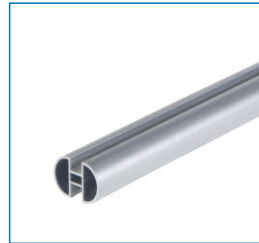
U-CHANNEL (SILVER)
POWDER COATED
ALUMINIUM



DOOR STOPPER (SILVER)
POWDER COATED
ALUMINIUM



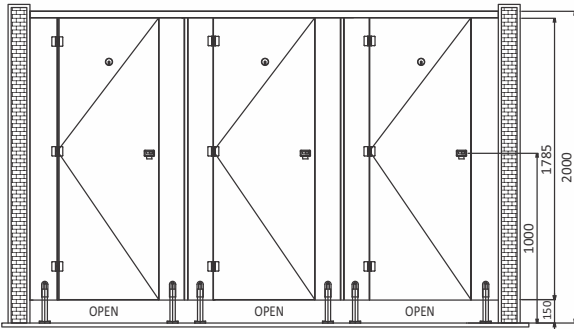
F-CHANNEL (SILVER)
POWDER COATED
ALUMINIUM



TOP RAIL (SILVER)
POWDER COATED
ALUMINIUM

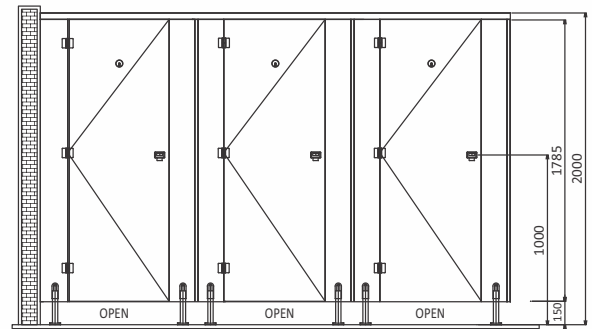


EU-Enclosed Unit

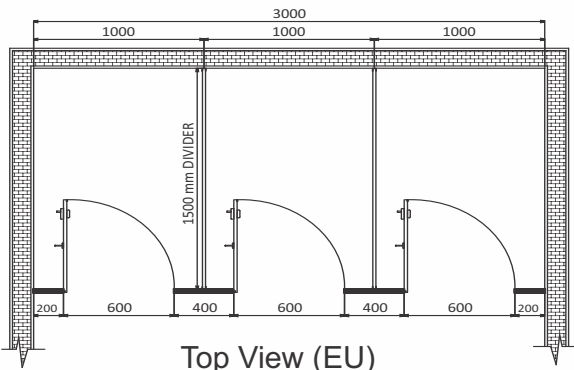


Front View (EU)

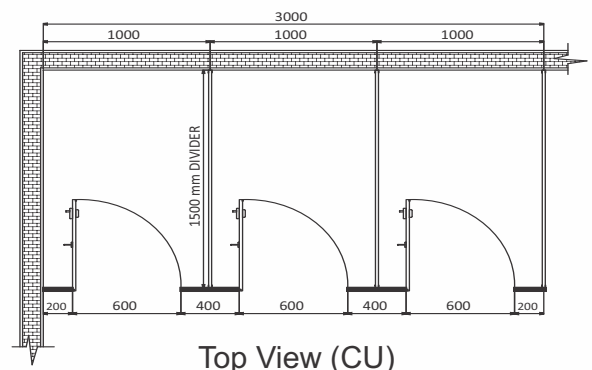
CU-Corner Unit



Front View (CU)



Top View (EU)

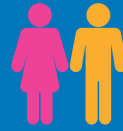


Top View (CU)

Hardware Fixing Details

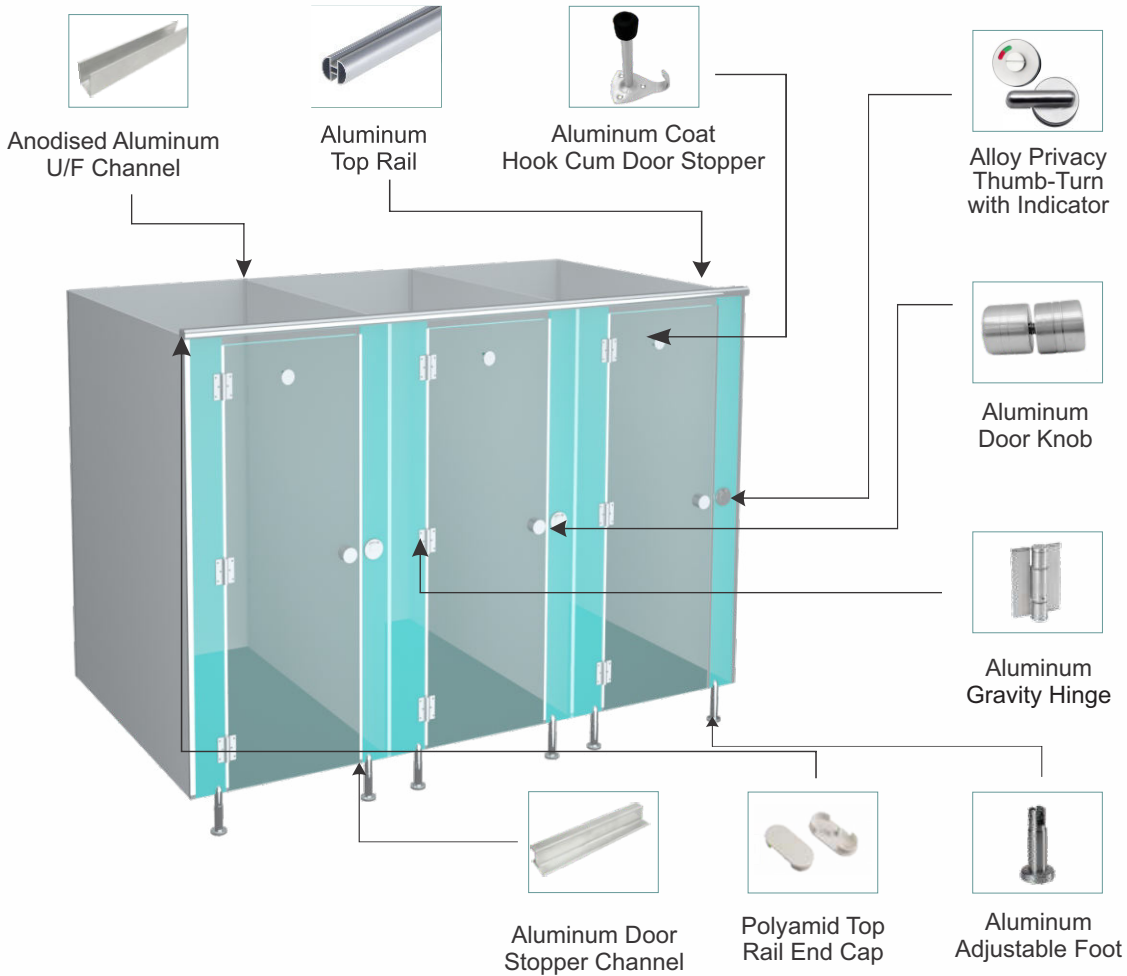
The adjustable foot that supports the pilasters is made from stainless steel (Grade 304) and its base is anchored to the floor with nylon plug, fixed into ground with stainless steel screws. There is a ground clearance of 150 mm. Stainless Steel U-channels are used to attach with the divider panels to the wall as well as the mid panel with stainless steel (Grade 304) screw inserts. Stainless Steel top rail coated in stainless steel colour is used to fix the pilasters at the top. Doors are incorporated with the noise deafening tape to reduce the noise effect. All other fittings like hinges, coat hook, adjustable foot and lock set/latch indicator is manufactured in stainless steel.





Hardware Detailing

Each restroom cubicle is equipped with the following set of hardware fittings:



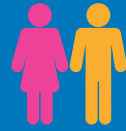
Dimension Detailing

Standard Dimensions	General (mm)	Physically Challenged (mm)
Width of cubicle	1000	1500
Depth of cubicle	1500	1750
Height of entire cubicle	2000	2000
Width of door	600	900
Height of door	1785	1785
Ground clearance	150	150

CW PureEx - SS

CW PureEx Stainless Steel is developed for providing higher endurance and spectacular design. Magnificent design united with great functional features makes it an innovative restroom series offering uncompromised quality at an economical price along with extraordinary benefits. Engineered with 12mm or 18mm thick high pressure Compact Laminate, this model comes with the combination of stainless steel (SS 316 & SS 304) hardware with SS 304 top rail and fixing channels. It's a valuable choice for users who desire a highly adaptable restroom space, preferred across the globe for its budget effective product detailing and matchless quality.





ADJUSTABLE LEG
STAINLESS STEEL
304 SS



INDICATOR LOCK
STAINLESS STEEL
304 SS



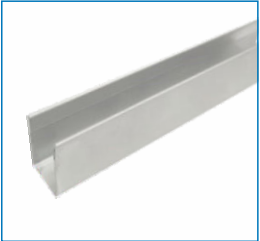
COAT HOOK
STAINLESS STEEL
304 SS



GRAVITY HINGE
STAINLESS STEEL
304 SS



DOOR KNOB
STAINLESS STEEL
304 SS



U-CHANNEL
STAINLESS STEEL
304 SS



DOOR STOPPER
STAINLESS STEEL
304 SS



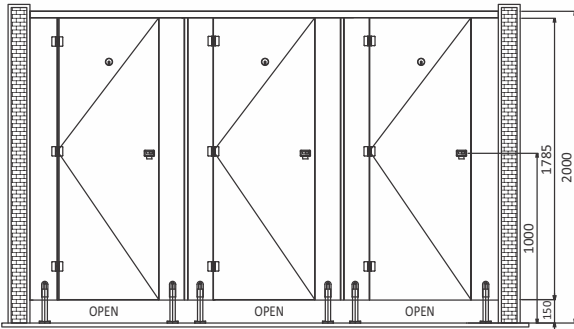
F-CHANNEL
STAINLESS STEEL
304 SS



TOP RAIL
STAINLESS STEEL
304 SS

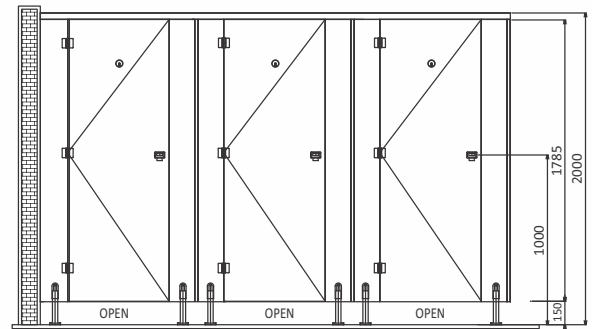


EU-Enclosed Unit

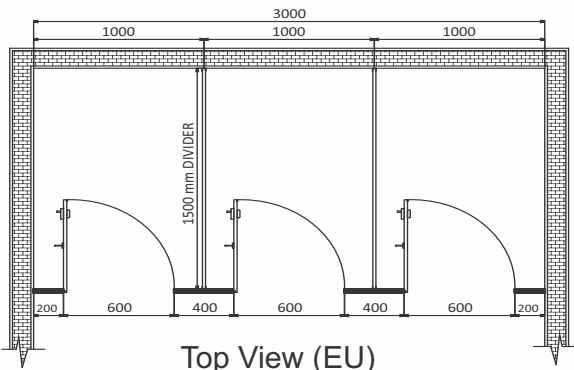


Front View (EU)

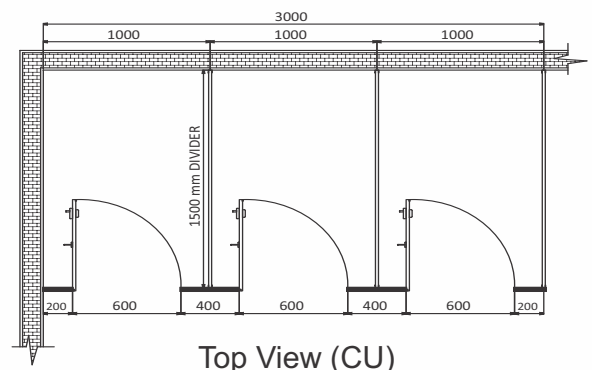
CU-Corner Unit



Front View (CU)



Top View (EU)



Top View (CU)

Hardware Fixing Details

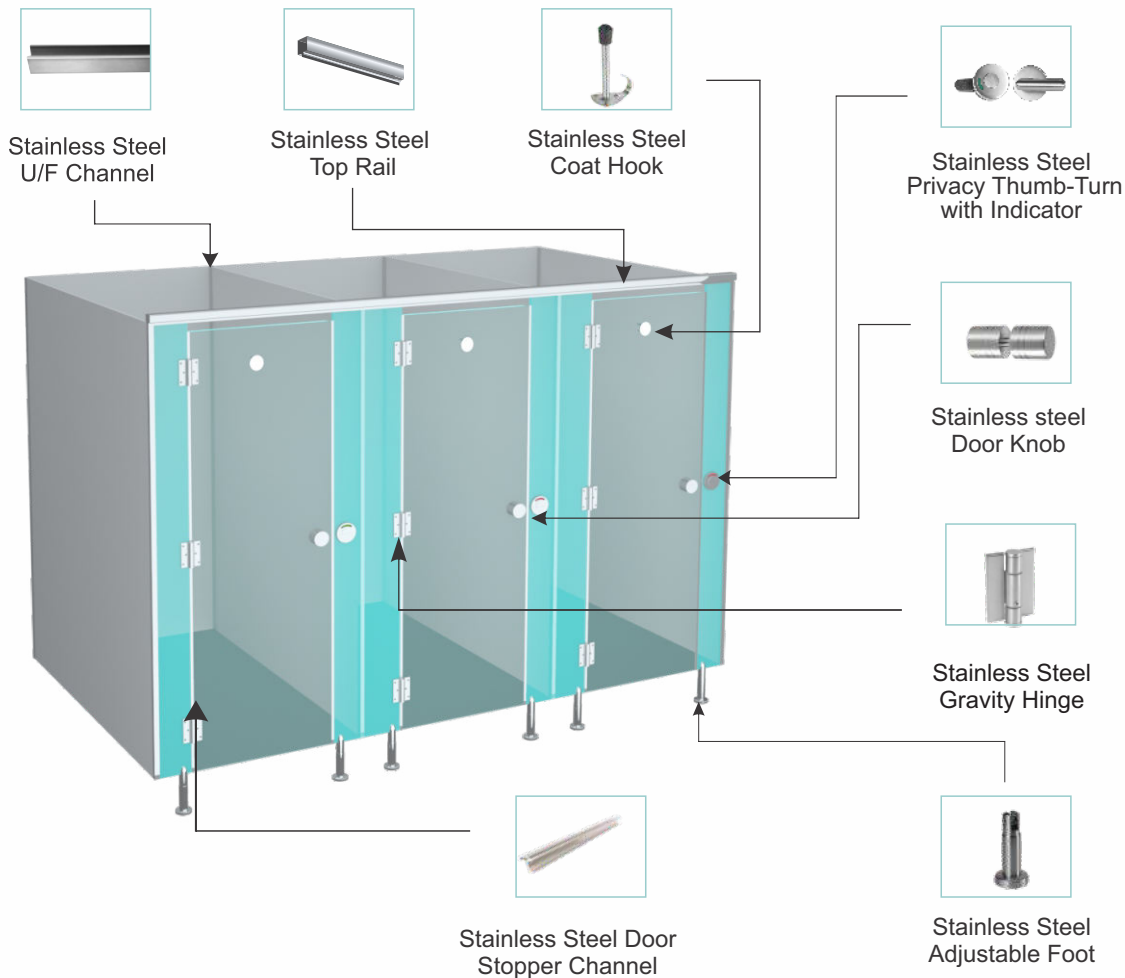
The adjustable foot that supports the pilasters is made from stainless steel (Grade 304) and its base is anchored to the floor with nylon plug, fixed into ground with stainless steel screws. There is a ground clearance of 150 mm. Stainless Steel 304 U-channels are used to attach with the divider panels to the wall as well as the mid panel with stainless steel (Grade 304) screw inserts. Stainless Steel top rail coated in stainless steel colour is used to fix the pilasters at the top. Doors are incorporated with the noise deafening tape to reduce the noise effect. All other fittings like hinges, coat hook, adjustable foot and lock set/latch indicator is manufactured in stainless steel.





Hardware Detailing

Each restroom cubicle is equipped with the following set of hardware fittings:



Dimension Detailing

Standard Dimensions	General (mm)	Physically Challenged (mm)
Width of cubicle	1000	1500
Depth of cubicle	1500	1750
Height of entire cubicle	2000	2000
Width of door	600	900
Height of door	1785	1785
Ground clearance	150	150

CW Routing Glance SS

Experience Classique collections another style-invincible, developed from 12 mm multi-layer high pressure Compact Laminate to give unparalleled performance and a stainless steel top rail for providing extra strength and stability. This 12 mm routing glance with shoe box up model replace the standard door stopper with both side routing edges of door, Rest of the hardwares like hinges, locks, door knobs and coat hooks are also produced in stainless steel. Thus, 12 mm or 18mm routing glance is the perfect selection for your restroom space designing.





SHOE-BOX UP
STAINLESS STEEL
316 SS



INDICATOR LOCK
STAINLESS STEEL
304 SS



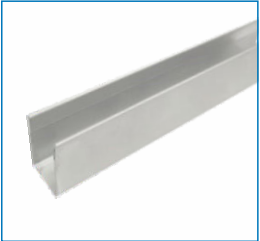
COAT HOOK
STAINLESS STEEL
304 SS



GRAVITY HINGE
STAINLESS STEEL
304 SS



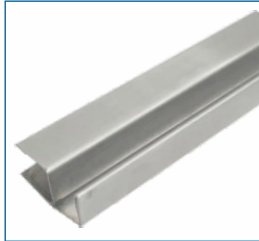
DOOR KNOB
STAINLESS STEEL
304 SS



U-CHANNEL
STAINLESS STEEL
304 SS



DOOR STOPPER
STAINLESS STEEL
304 SS



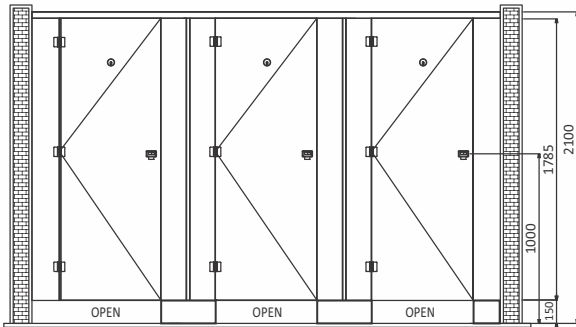
F-CHANNEL
STAINLESS STEEL
304 SS



TOP RAIL
STAINLESS STEEL
304 SS

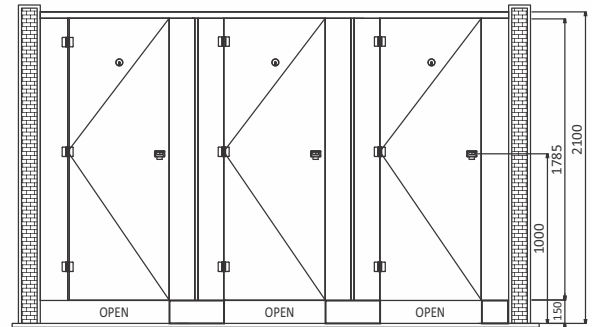


EU-Enclosed Unit

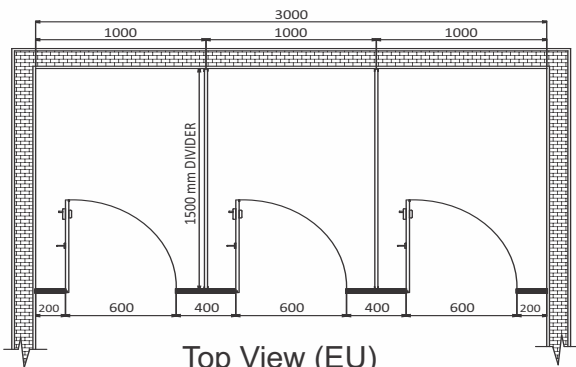


Front View (EU)

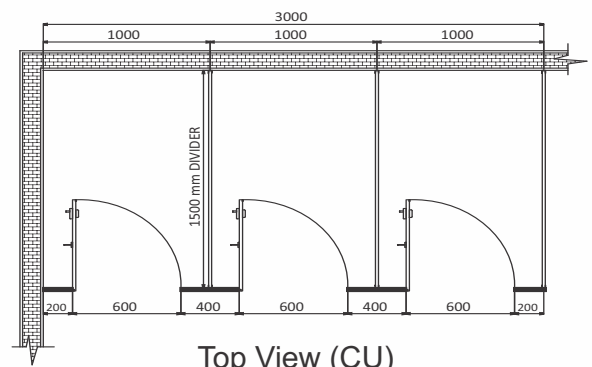
CU-Corner Unit



Front View (CU)



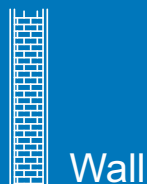
Top View (EU)



Top View (CU)

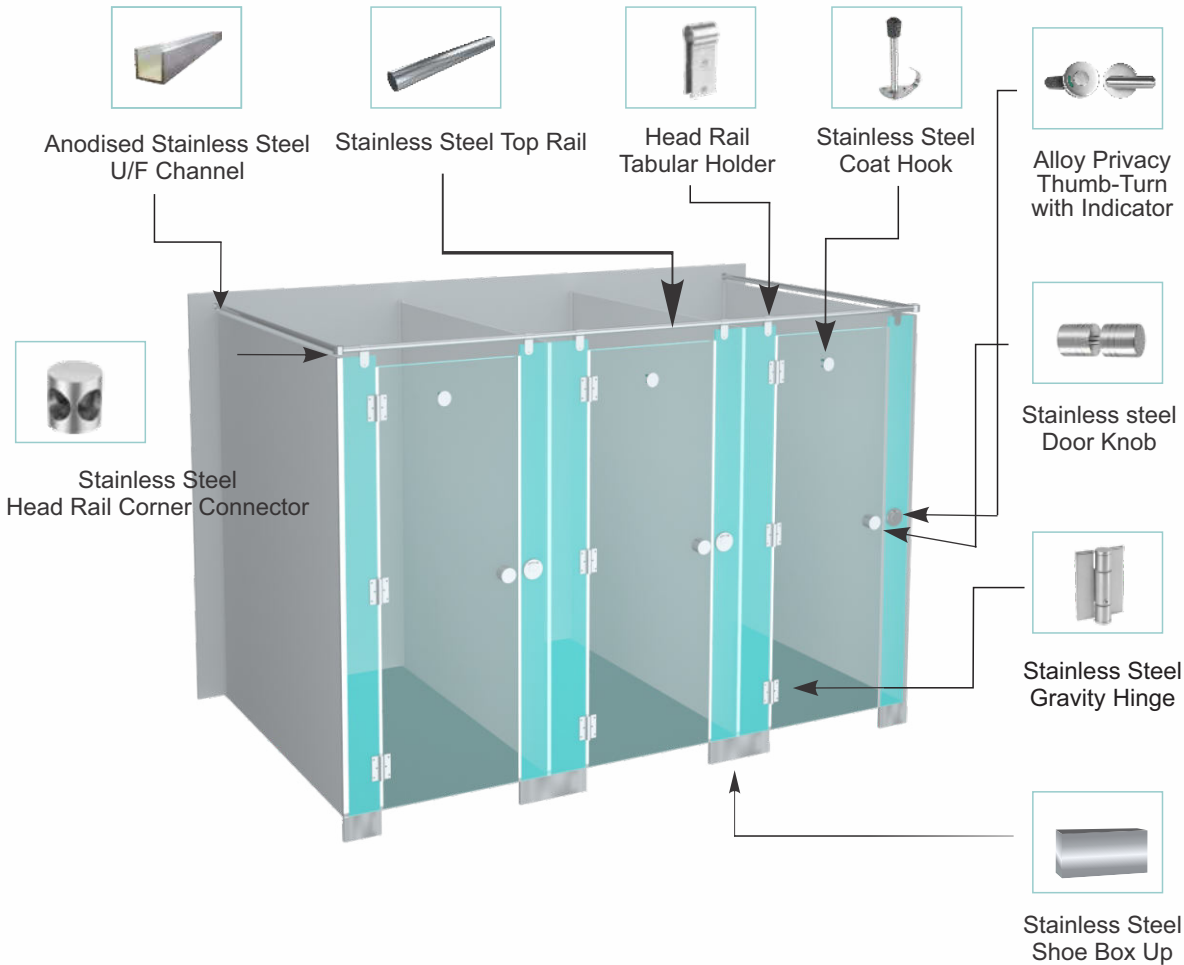
Hardware Fixing Details

The adjustable foot that supports the pilasters is made from stainless steel (Grade 304) and its base is anchored to the floor with nylon plug, fixed into ground with stainless steelscrews. There is a ground clearance of 150 mm. Stainless Steel U-channels are used to attach with the divider panels to the wall as well as the mid panel with stainless steel (Grade 304) screw inserts. Stainless Steel top rail coated in stainless steel colour is used to fix the pilasters at the top. Doors are incorporated with the noise deafening tape to reduce the noise effect. All other fittings like hinges, coat hook, adjustable foot and lock set/latch indicator is manufactured in stainless steel.



Hardware Detailing

Each restroom cubicle is equipped with the following set of hardware fittings:



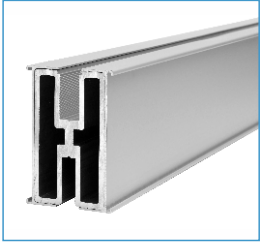
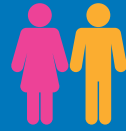
Dimension Detailing

Standard Dimensions	General (mm)	Physically Challenged (mm)
Width of cubicle	1000	1500
Depth of cubicle	1500	1750
Height of entire cubicle	2100	2100
Width of door	600	900
Height of door	1785	1785
Ground clearance	150	150

CW Floppy

CW Floppy are tailor-made for restrooms. These cubicles have a clear floor concept which is very friendly as far as the maintenance is concerned. These cubicles can be easily installed due to their contemporary designs. Their floater concept gives them a natural yet classic touch. To enhance the exquisiteness, all doors are 12 mm or 18mm thick and their stainless steel hardware fittings make these cubicles highly durable and longlasting. These cubicles are recommended for commercial complexes, sports clubs and gyms etc.





TOP RAIL
POWDER COATED
ALUMINIUM



INDICATOR LOCK
STAINLESS STEEL
304 SS



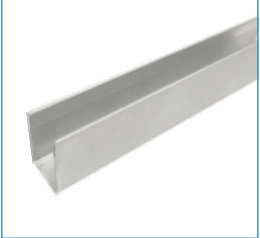
COAT HOOK
STAINLESS STEEL
304 SS



GRAVITY HINGE
STAINLESS STEEL
304 SS



DOOR KNOB
STAINLESS STEEL
304 SS



U-CHANNEL
STAINLESS STEEL
304 SS



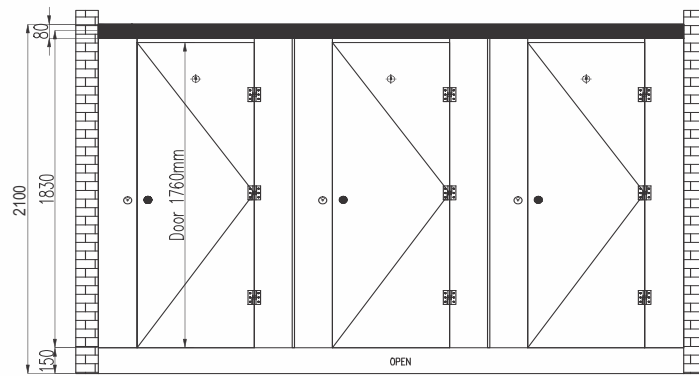
DOOR STOPPER
STAINLESS STEEL
304 SS



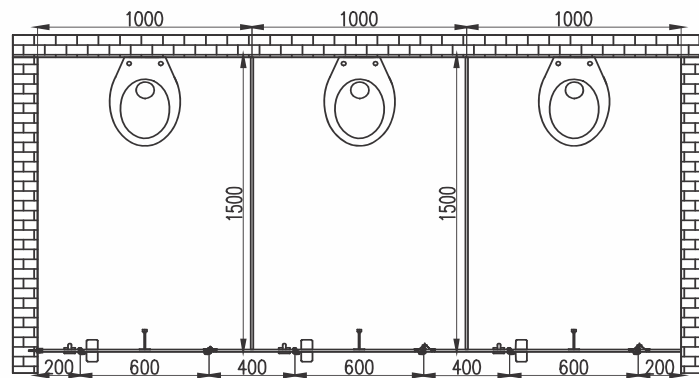
F-CHANNEL
STAINLESS STEEL
304 SS



EU-Enclosed Unit



Front View (EU)



Top View (EU)

Hardware Fixing Details

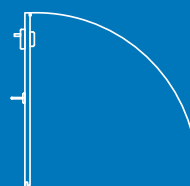
The aluminum hollow D shape Toprail (Grade- 6063 T-6) is first held to the concrete wall on both ends by MS 'L' angel which is fixed onto the wall with stainless steel screws. The front pilaster are fixed into the Toprail with stainless steel screw insert on the back side on Toprail, the SS U-Channel are attached with the divider panel to the wall as well as the mid panel. There is ground clearance of 150mm



Pilster



Wall

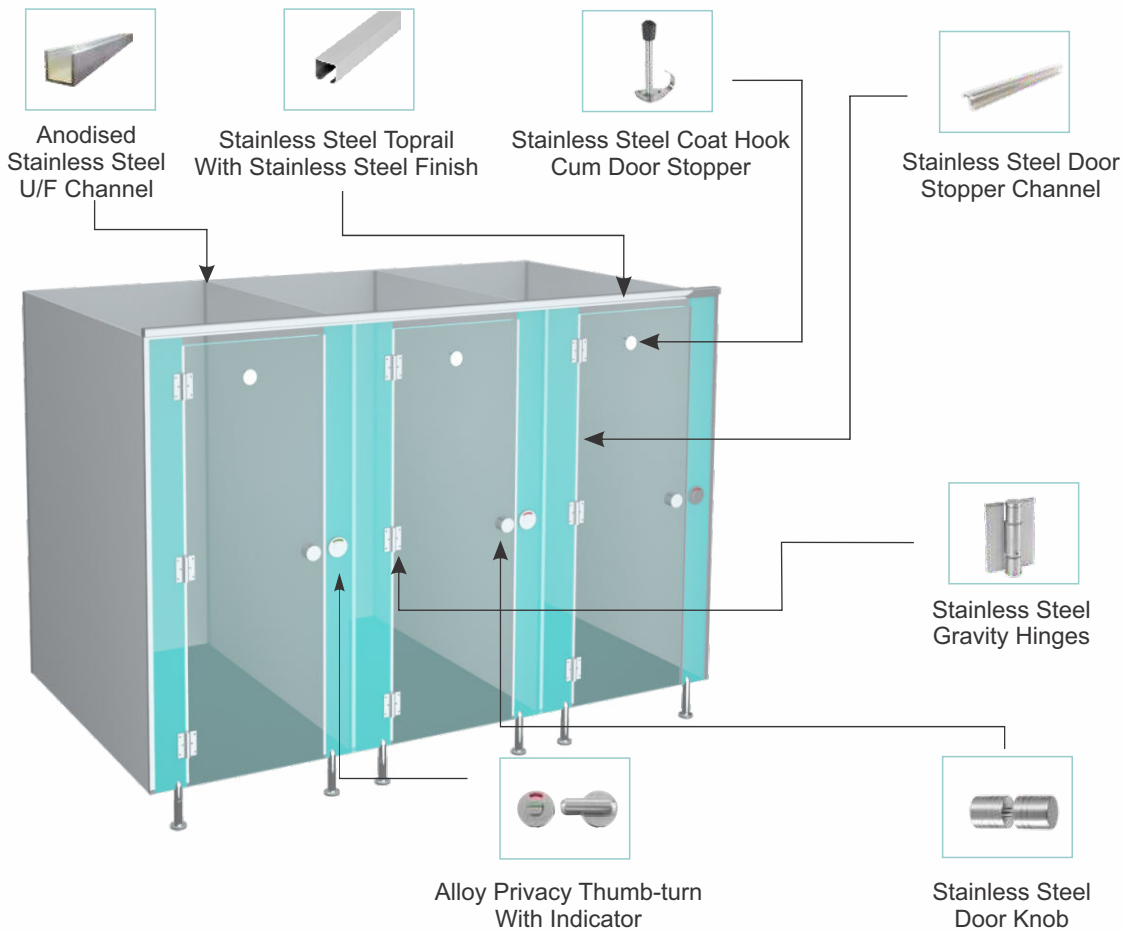


Door



Hardware Detailing

Each restroom cubicle is equipped with the following set of hardware fittings:



Dimension Detailing

Standard Dimensions	General (mm)	Physically Challenged (mm)
Width of cubicle	1000	1500
Depth of cubicle	1500	1750
Height of divider	1785	1785
Height of entire cubicle	2100	2100
Width of door	600	900
Height of door	2035	2035
Ground clearance	150	150

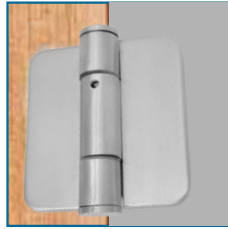
CW Ceiling Hungs SS

Add classic wings to your restrooms Innovation with simplicity and splendor, Cubicle World presents you Classique Wings, a sparkling new assortment of restroom cubicles. Planned under the blueprints of aesthetics, this ceiling hung model has been designed to further enhance the beauty of your washrooms, while creating desirable space. Its unique shape and profile provide ample space to wipe the floors easily and without any hassles. So, introduce these exclusive masterworks to your rest rooms and enrich your creations, the contemporary and classic way.

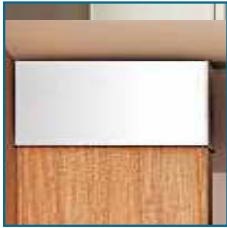




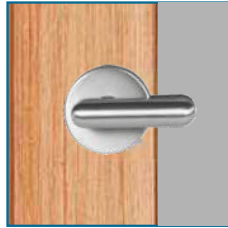
Alloy
Privacy Indicator



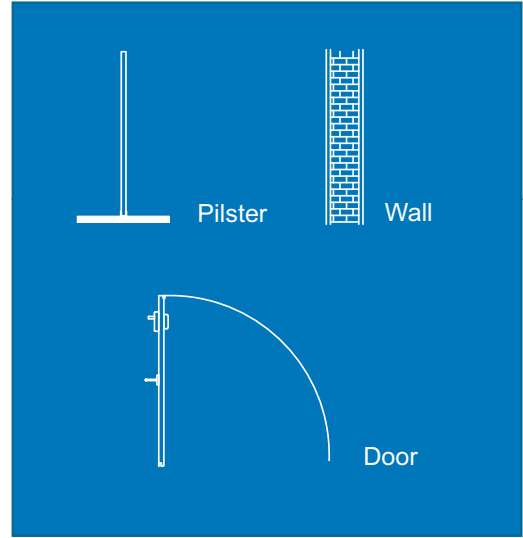
Stainless Steel
Gravity Hinges



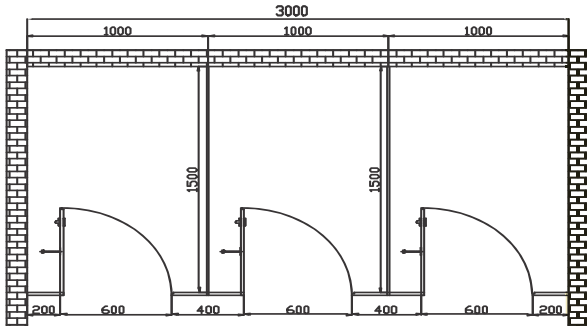
Stainless Steel
Shoe Box Up



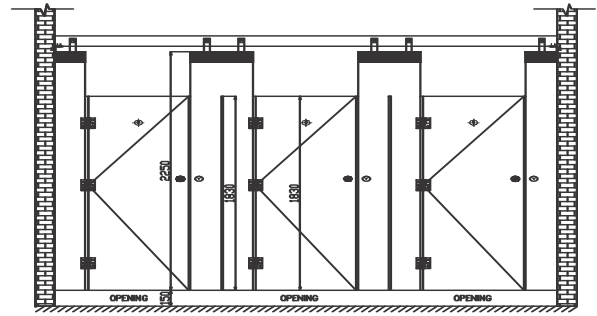
Alloy Privacy
Thumb Turn



EU-Enclosed Unit



Top View (EU)



Front View (EU)

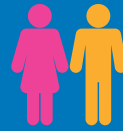
Dimension Detailing

Standard Dimensions	General (mm)	Physically Challenged (mm)
Width of cubicle	1000	1500
Depth of cubicle	1500	1500
Height of entire cubicle	2400	2400
Width of door	600	900
Height of door	1830	1830
Ground clearance	100	100

CW Unshakable Shoe Boxup

Experience Classique collections another style-invincible, developed from 12 mm multi-layer high pressure Compact Laminate to give unparalleled performance and a stainless steel top rail for providing extra strength and stability. This 12 mm shoe box up model replaces the standard adjustable foot with a cleaner stainless steel box, located at the bottom to provide a clean line design. Rest of the hardware like hinges, locks, door knobs and coat hooks are also produced in stainless steel. Thus, 12 mm or 18mm shoe box up model is the perfect selection for your restroom space designing.

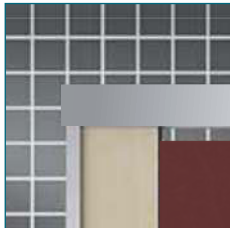




Stainless Steel
Shoe Box Up



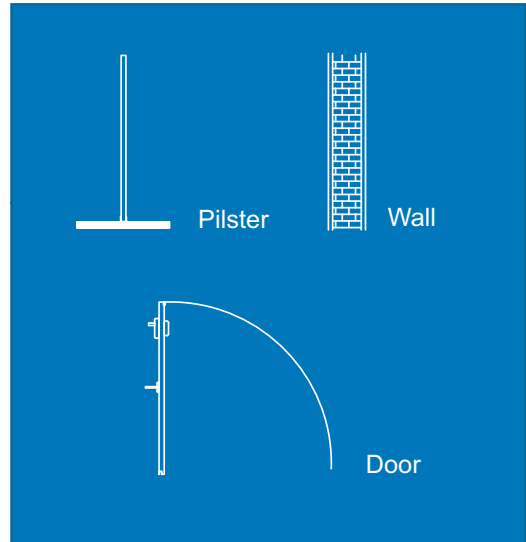
Stainless Steel
Gravity Hinge



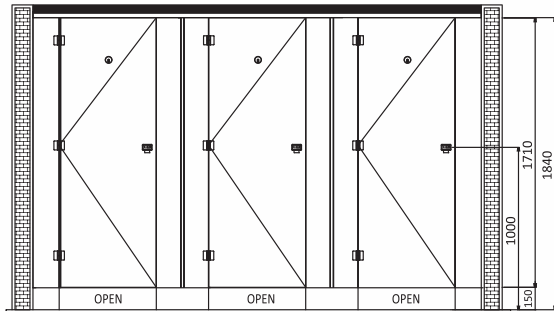
Head Rail
Tubular Holder



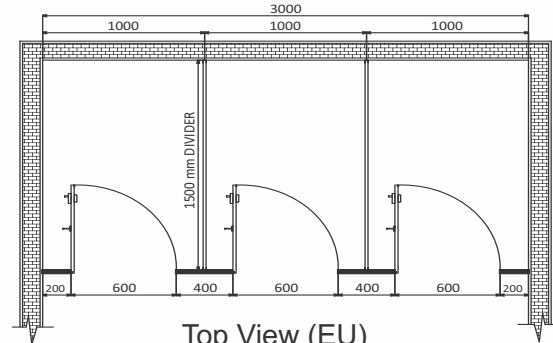
Alloy Privacy
Thumb Turn



EU-Enclosed Unit



Front View (EU)



Top View (EU)

Dimension Detailing

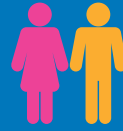
Standard Dimensions	General (mm)	Physically Challenged (mm)
Width of cubicle	1000	1500
Depth of cubicle	1500	1750
Height of entire cubicle	2100	2100
Width of door	600	900
Height of door	1710	1710
Ground clearance	110	110

Note: Classique's Evergreen comes with stainless steel (Grade 304) top rail arrangement
On special demand, overall height of CWP Ever Popular SS Pipe restroom cubicle can be increased up to 2100 mm

CW Ever Popular SS Pipe

Simple yet contemporary is anonymous with CWP Ever Popular SS Pipe Evergreen. The model comes with the most extensively used stainless steel hardware coupled with sturdiness of high pressure 12mm or 18mm Compact Laminate. It offers standard adjustable foot along with stainless steel top rail for providing extra strength. The rest of the hardware like the hinges, locks, door knobs and coat hooks are also provided in stainless steel. Hence, making it an elegant and ideal option for heavy traffic areas where functionality matters the most.





TOP RAIL
STAINLESS STEEL
304 SS



INDICATOR LOCK
STAINLESS STEEL
304 SS



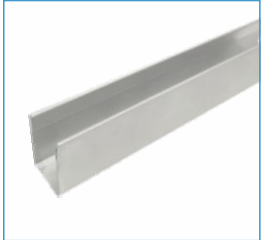
COAT HOOK
STAINLESS STEEL
304 SS



GRAVITY HINGE
STAINLESS STEEL
304 SS



DOOR KNOB
STAINLESS STEEL
304 SS



U-CHANNEL
STAINLESS STEEL
304 SS



DOOR STOPPER
STAINLESS STEEL
304 SS



WALL BRACKET
STAINLESS STEEL
304 SS

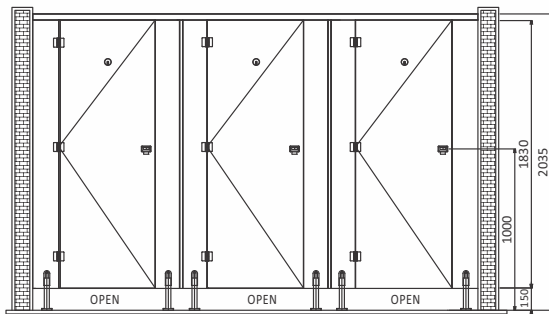


CORNER HOLDER
STAINLESS STEEL
304 SS

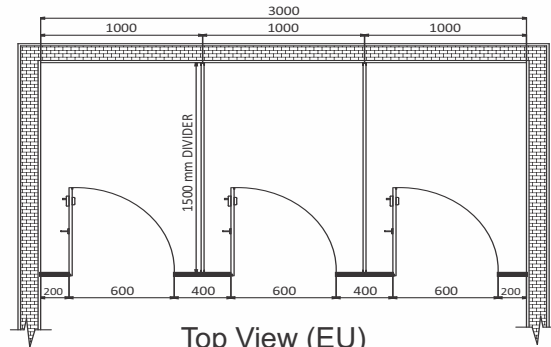


TUBULAR HOLDER
STAINLESS STEEL
304 SS

EU-Enclosed Unit



Front View (EU)



Top View (EU)

Dimension Detailing

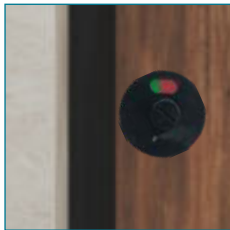
Standard Dimensions	General (mm)	Physically Challenged (mm)
Width of cubicle	1000	1500
Depth of cubicle	1500	1750
Height of entire cubicle	2035	2035
Width of door	600	900
Height of door	1830	1830
Ground clearance	150	150

Note: Classique's Evergreen comes with stainless steel (Grade 304) top rail arrangement
On special demand, overall height of CWP Ever Popular SS Pipe restroom cubicle can be increased up to 2100 mm

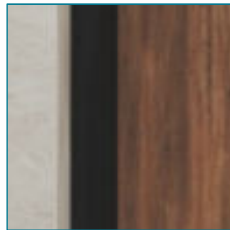
CW PD Door

A combination of style and stability. Vibrance's Splendid is ideal for renovation projects, using existing intermediate brick walls. With the usage of existing intermediate brick walls this model fits in perfectly as it suffices only the door requirements. Thus, Splendid replaces the traditionally used door setup with contemporary looking masonry walls. This model comes with a 12 mm or 18mm thick Compact Laminate doors in varied colors and designs along with aluminum and nylon polyamide (Grade 6) fittings.





Nylon Polymide
Thumb-Turn & Indicator



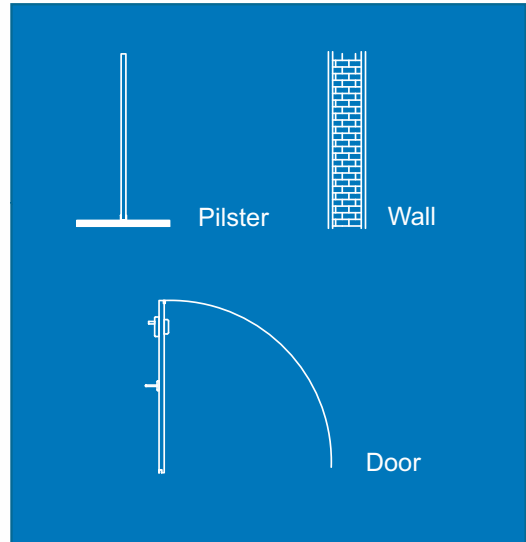
Stainless Steel D-Post Channel



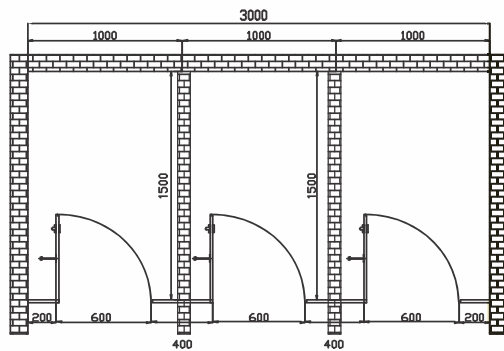
Nylon Polymide Coat Hook



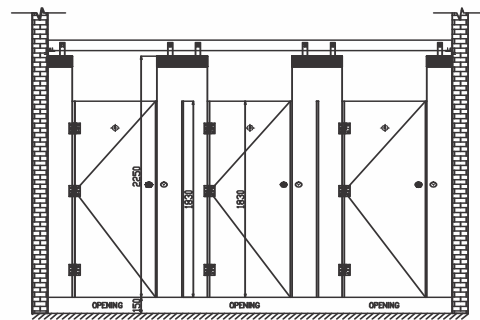
Indicator Lock Set



EU-Enclosed Unit



Top View (EU)



Front View (EU)

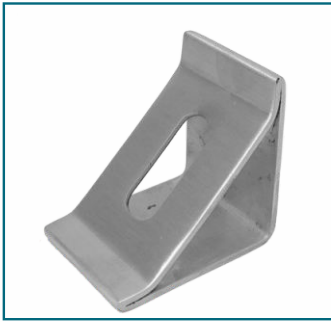
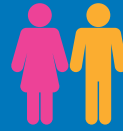
Dimension Detailing

Standard Dimensions	General (mm)	Physically Challenged (mm)
Door Width of cubicle	600-900	As this model only uses door applications the dimensions for physically challenged setup will depend on the site's walls
Height of entire cubicle	1980	
Height of door	1830	
Ground clearance	150	150

CW Urinal Partition

Give a new meaning to your restroom space with vibrant coloured Privy Divider Panel Laminates (urinal partition) coupled with rust resistant stainless steel fittings. Composed with superior product features to provide greater privacy and hygiene to the users. The urinal partition are manufactured using 12 mm or 18mm thick Compact Laminates, in accordance to IS-0002046- 199/BSEN-438(1)-91. Further its product composition consists of one undivided piece, chamfered edges with no joints in between which provides a cleaner space. Equipped with the comprehensive series of conventional designs, Privy Divider Panels are available in exciting colours and shapes and promises to give your restroom space an exquisite yet organised look.





Stainless Steel L-Clamps

Hardware Detailing

Each divider panel is equipped with the following hardware fittings:

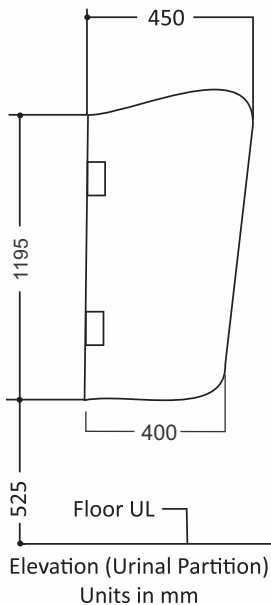
- Stainless steel L-clamps is used to attach the divider to the wall

Hardware Fixing Details

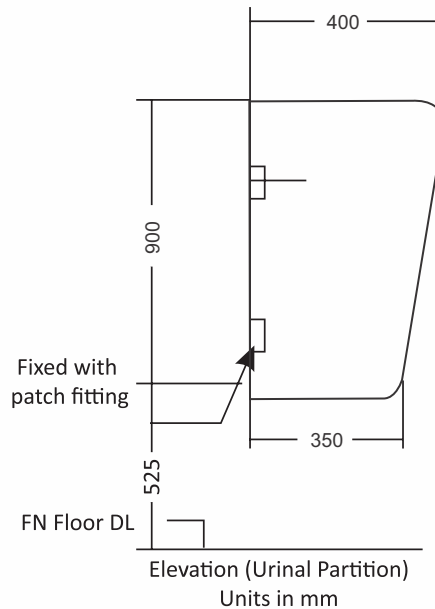
Stainless steel L-clamps hardware fittings along with SU-304 screws are used to fix the urinal partitions on the wall.

EU-Enclosed Unit

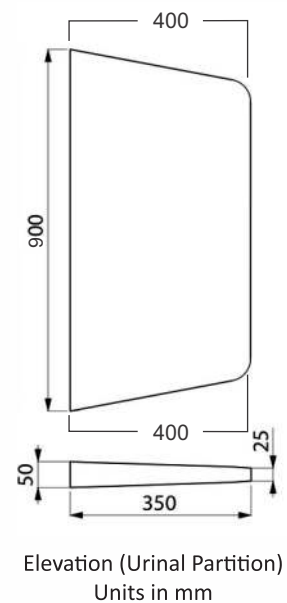
Model A



Model B



Model C



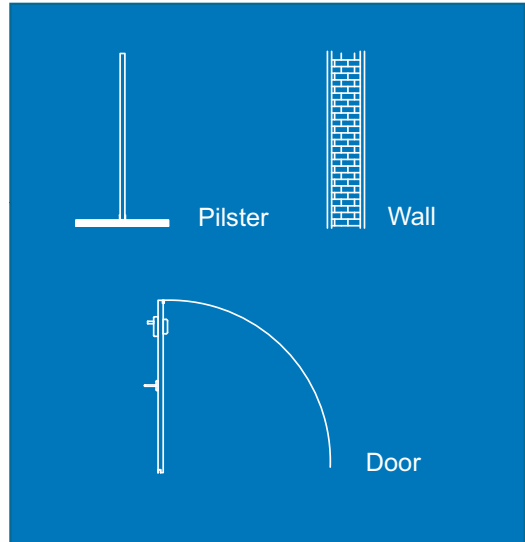
Dimension Detailing

Standard Dimensions	General (mm)
Total Height	1000-2000
Depth	450-550
Gap from ground floor	500-600

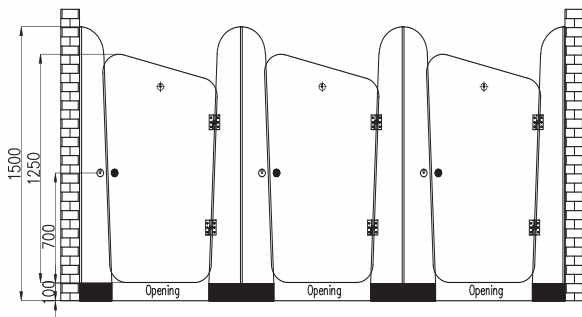
CW Kids Toilet Partition

A lively, colourful, safe and sturdy world, especially designed to enhance the artistic of the kinds. As its unique shape open the world of imagination for kids, the vivid use of colours craft different strokes of creativity on kids' minds. Made using stainless steel hardware and accessories like door knob, gravity hinges thumb turn lockset indicators coat hooks, these cubicles are designed for a longer durability. The U-channels, SS-shoe box plate, MS- base plate, rubber noise deafening tape, screws and wall plugs add that extra toughness to these restroom cubicles. After all crafting such perfection is not child's play.

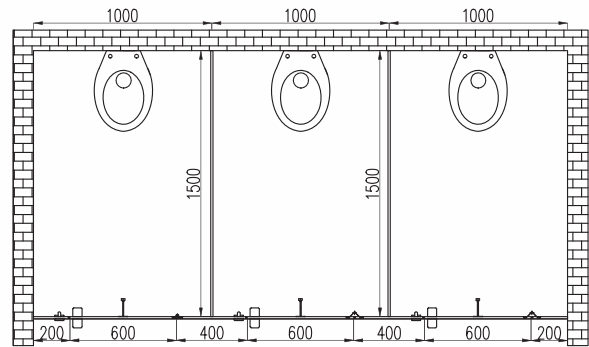




EU-Enclosed Unit



Front View



Top View

Dimension Detailing

Standard Dimensions	General (mm)	Physically Challenged (mm)
Width of cubicle	1000	1500
Depth of cubicle	1500	1700
Height of divider	1200	1200
Height of entire cubicle	1500	1500
Width of door	600	900
Height of door	1250	1250
Ground clearance	100	100

CW Lockers

CW lockers open up a new generation of locker rooms. A world of ultra-modern and exceptionally smart storage solutions made using CWP compact laminates.

Brilliant designed and widely durable, they are suitable for high humidity areas such as fitness clubs, sauna rooms, swimming pools, retail environments and sports centers.

Available in a wide range of styles, sizes, configurations and colors to achieve a perfect match with your services and interior designs. These systems are extra-tough, environment-friendly, easy to install and even easier to use.

What's more, they come with unique Anti-bacterial property that makes them a superb choice for hygiene concern areas.

Key Highlight

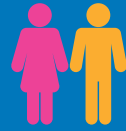
- Made using Anti-bacterial compact laminates (3mm to 9mm)
- Made using heavy duty Stainless Steel channel
- Provision of 3 locking systems
 - Customer lock
 - Inbuilt lock
 - Keyless lock
- Comes with an option of different base mechanism
 - Stainless Steel leg base
 - Compact Laminates base
 - Concrete base



1 Tier Locker

Dimension Detailing

Standard Dimensions	Size (mm)
Width of locker	300
Depth of Locker	450
Height of Locker	1800



2 Tier Locker



Dimension Detailing

Standard Dimensions	Size (mm)
Width of locker	300
Depth of Locker	450
Height of Locker	895

3 Tier Locker



Dimension Detailing

Standard Dimensions	Size (mm)
Width of locker	300
Depth of Locker	450
Height of Locker	594

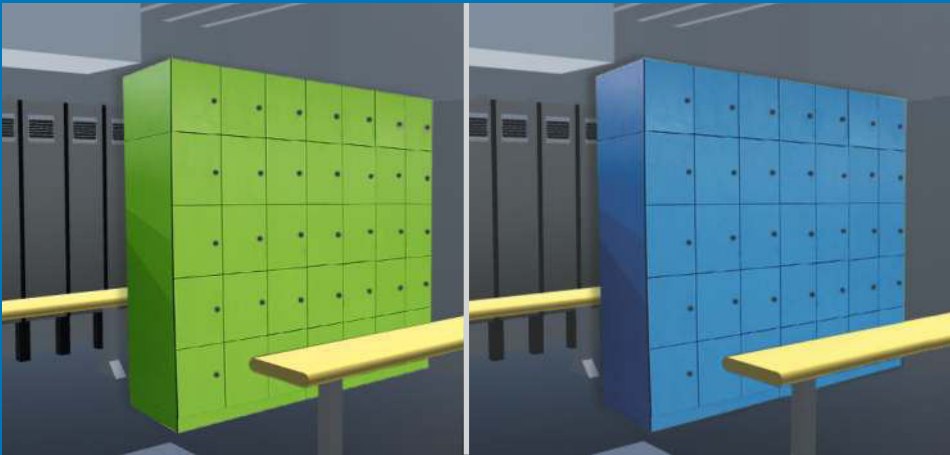
4 Tier Locker



Dimension Detailing

Standard Dimensions	Size (mm)
Width of locker	300
Depth of Locker	450
Height of Locker	443

5 Tier Locker



Dimension Detailing	
Standard Dimensions	Size (mm)
Width of locker	300
Depth of Locker	450
Height of Locker	353

6 Tier Locker



Dimension Detailing	
Standard Dimensions	Size (mm)
Width of locker	300
Depth of Locker	450
Height of Locker	292

Z Tier Locker



Dimension Detailing	
Standard Dimensions	Size (mm)
Width of locker	300
Depth of Locker	450
Height of Locker	1200/591

Our Valued Customer





We Impart Health to Life



Vimla Vidyalaya
Aim High, Fly Higher.



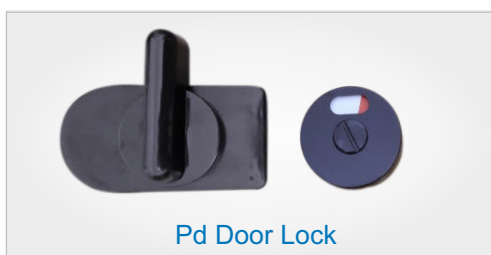
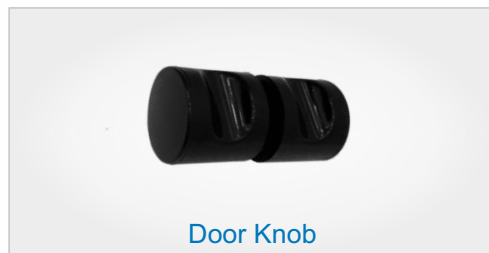
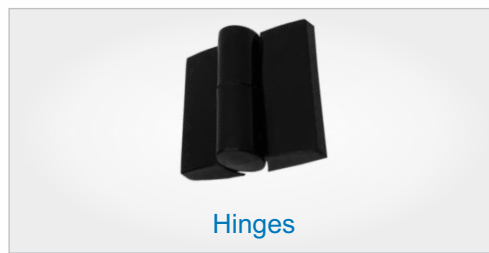
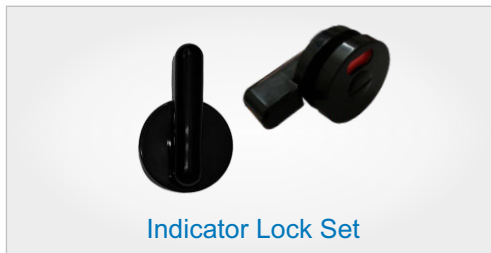
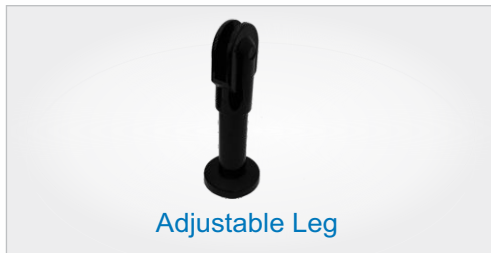
Share & Stock Brokers Pvt. Ltd.



Ayodhya Developers And Builders

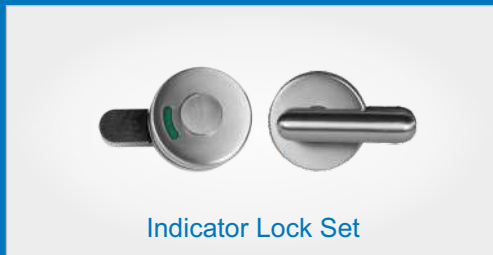
Accessories

- Nylon Hardware Set

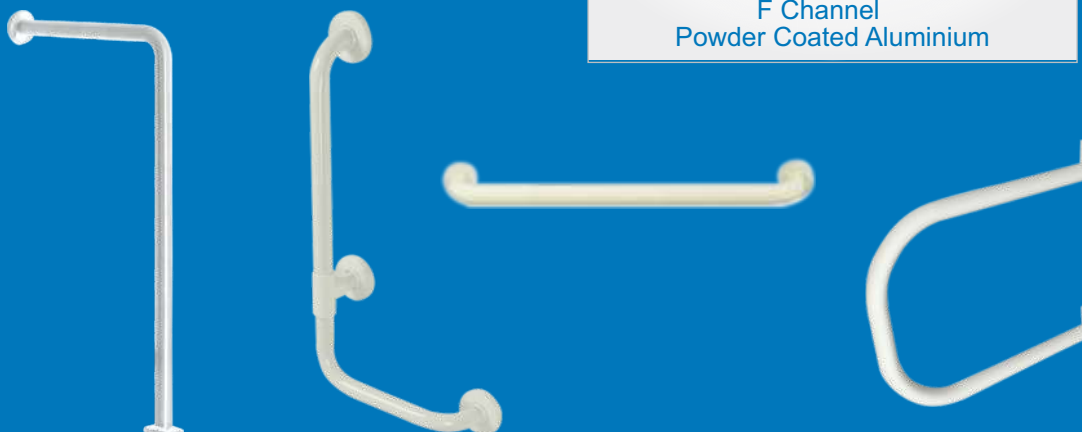


Accessories

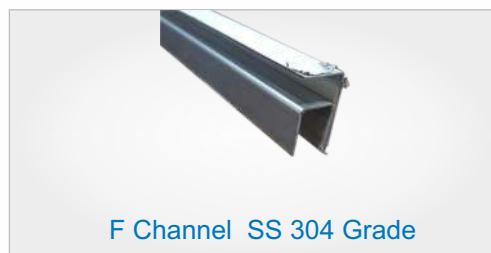
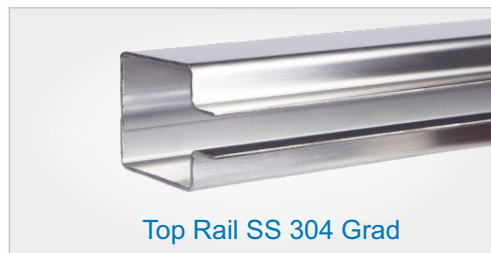
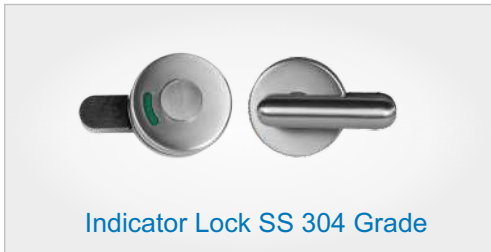
- Aluminium With Stainless steel



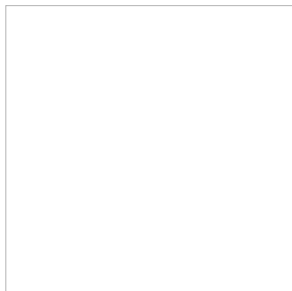
- Handicap Accessories



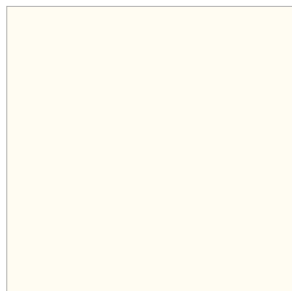
● SS Hardware Set



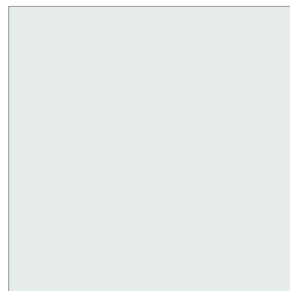
Color Shades



CW-Super White
AT-1101 SD



CW-Frosty White
AT-1103 SD



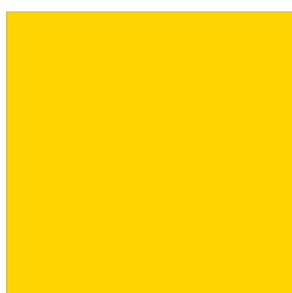
CW-Silver Grey
AT-1104 SD



CW-Black
AT-1106 SD



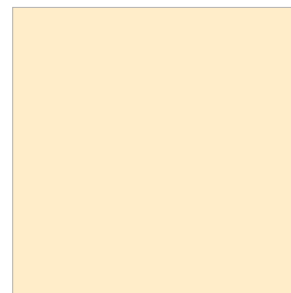
CW-Cardinal Red
AT-1107 SD



CW-Marigold Yellow (PM)
AT-1108 SD



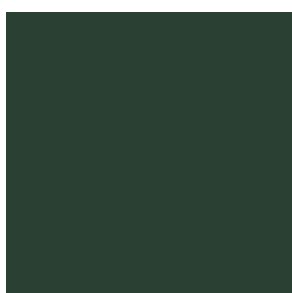
CW-Electric Blue (PM)
AT-1109 SD



CW-Ivory (PM)
AT-1111 SD



CW-Gothic Grey
AT-1113 SD



CW-Spanish Green
AT-1115 SD



CW-Orange
AT-1116 SD



CW-Parrot Green
AT-1119 SD



CW-Celestial Blue
AT-1125 SD



CW-Pastel Orange
AT-1133 SD



CW-Mocha Brown
AT-1134 SD



CW-Olive
AT-1135 SD



CW-Grey Aluminium
ST-1408 SD



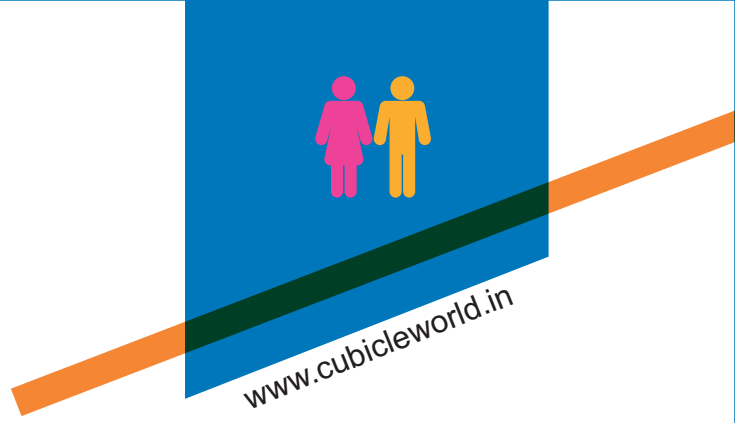
CW-Light Aluminium
ST-1411 SD



CW-Grey Stone
ST-1423 SD



CW-Diamond Stone
ST-1424 SD



CW-Natural Teak (PM)
AT-3001 SD



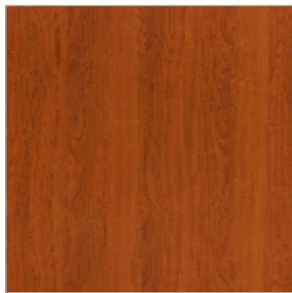
CW-Straight Grained Wenge (PM)
AT-3008 SD



CW-Classic Planked Walnut (PM)
AT-3009 SD



CW-Inntel Beach (PM)
AT-3016 SD



CW-Oxford Cherry (PM)
AT-3022 SD



CW-Alberta Maple (P)
AT-3023 SD



CW-Bavarian Beech (PM)
AT-3027 SD



CW-Elegant Teak (PM)
AT-3041 SD



CW-Swiss Oak (M)
AT-3043 SD



CW-Teak Gold (M)
AT-3091 SD



CW-Choco Walnut (PM)
AT-3370 SD



CW-Wenge Brown (PM)
AT-1135 SD



CW-Ivory Oak
AT-3408 SD



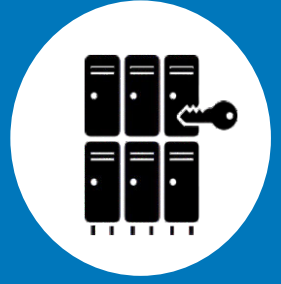
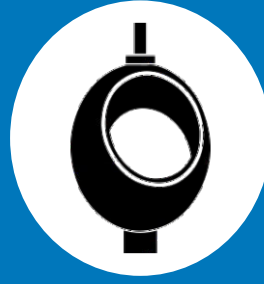
CW-Linen Metallic (PM)
AT-3413 SD



CW-Linen Ivory (PM)
AT-3414 SD



CW-Nordic Terra
ST-1422 SD



Building No. 9, Office No. 424, Bhagyodaya
Khernagar, Near Kherwadi Signal,
Bandra East, Mumbai - 400051

Contact: +91 98925 71449 | Email: sales@cubicleworld.in | Web: www.cubicleworld.in